

Turada® Hardwood Shingles

The Untreated Alternative®

THE WOOD

Turada® Hardwood Shingles are manufactured by Superior Shingles and Wood Products (SSWP) in Guyana, South America. They are produced from sustainably harvested Wallaba logs. Wallaba is the most abundant timber species growing on the "White Sands Forest Belt" that stretches midway across the three Guianas (Guyana, Suriname, and French Guiana). SSWP uses logs which are over 24" in diameter, thereby ensuring that only mature Wallaba trees are felled. Young Wallaba trees remain in the forest, guaranteeing species availability in future generations.



Turada® Wallaba is a durable and attractive hardwood. It is significantly stronger than traditional red cedar or treated pine shingles. Turada® brand shingles are easy to handle and easy to install. Turada® Hardwood Shingles:

- Are naturally resistant to insects and decay
- Have withstood category 5 hurricane winds
- Are the highest fire-rated wood shingle
- Have a lifespan of over 50 years

Stocked and Distributed By:
CAPITAL
FOREST PRODUCTS

Mid Atlantic

410-280-6102 (P)

410-280-6108 (F)

www.CapitalForest.com

New England

781-749-0780 (P)

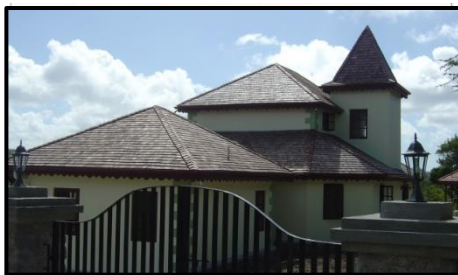
781-749-8826 (F)

www.CapitalForest.com



ENVIRONMENTAL

Turada® Hardwood shingles do not require chemical treatment, which makes them an environmentally responsible green building product. They also weather over time to a beautiful silver-gray color which results in a reflective, cool roof. This helps reduce environmental heating and lowers cooling costs.



THE FACTORY

SSWP's modern shingle plant assures production that meets the highest standards of quality in the industry. This state-of-the-art facility has been in operation since 2001 and has the capacity to produce approximately 200,000 square feet of shingles per month.

SHINGLE DESCRIPTION

Length: 18"

Width: 3" to 9" (average 6")

Butt Thickness: 5/2-1/4"

